

cue



PRODUCT OVERVIEW

JANUARY 2018
WWW.CUESYSTEM.COM

About CUE

More than 25 years CUE designs, manufactures and markets IP-based integration systems with beautiful control panels that enhance lifestyle, work-style, entertainment and communication. CUE technology is designed to bring prestige, usability and enjoyment to consumers. CUE provides the essential enabling hardware and software for a wide variety of solutions. CUE solutions include residential, corporate, educational, industrial and government applications. CUE has offices in Europe, Asia and the USA with a network of worldwide distribution.

CUE manufactures a wide range of wired and wireless control panels, including beautifully styled touch screen panels, architecturally stunning wall mounted button panels, as well as classically crafted hand held remotes.

CUE offers software applications which enable to use any Apple iOS, Android and Microsoft Windows device as a Cue System control panel.

CUE saves implementer's time and money with powerful, professional, yet easy to use Cue Visual Composer creation tool. This allows drag & drop software authoring with a vast library of graphic objects and equipment drivers.

CUE provides the hardware-link between multi-vendor home theatre, multimedia, videoconferencing, security, HVAC and other equipment. CUE has an expanding range of interfaces including IP, RS-232/422/485, KNX, DMX512, DALI, EnOcean, dry-contact-relay closure, IR emulation and transmission, general I/O, analog to digital signal conversion and voltage ramp output to name a few.



Table of Contents

Commercial Applications	4	Wired Touch Panels	18	Interfaces	28
Residential Applications	6	Built-In Models		Outputs	
Reservation System	8	touchCUE-5-B		PEA208	
touchONE-5-B		touchCUE-7-B		PEF200	
touchONE-7-B		touchCUE-12-B		Power Switching Units	
touchONE-12-B		Tabletop Models		relayCUE-8	
touchONE-7-M		touchCUE-5		PES03	
touchONE-12-M		touchCUE-7		Dimmers	
touchONE-overview		touchCUE-12		PED108	
touchONE-manager		On-Wall Models		PED202	
Home Automation	10	touchCUE-7-M		PET102	
Cloud-based Management	12	touchCUE-12-M		PET105	
Programming Tools	14	Mobile Solution	20	Power Supplies	30
Cue Visual Composer		appCUE		Wall and Desktop	
Technologies Integration	15	Controllers	21	CUEadapter-24J24	
Supported Technologies	16	Tabletop On-wall Hub		CUEadapter-24P24	
IT Standard Technologies		controlCUE-hub		DIN Rail	
DALI		Tabletop Rackmount Models		CUEadapter-24DIN15	
DMX512		controlCUE-versatile		CUEadapter-24DIN30	
KNX KNXnet/IP		controlCUE-one		CUEadapter-24DIN60	
Modbus TCP Modbus Serial		controlCUE-two		DALIpwr	
EnOcean		DIN Rail Models		Power over Ethernet	
BACnet/IP		controlCUE-versatile-d		PoE Adapter	
Z-Wave Gateway		controlCUE-dali-d		Accessories	31
MIDI		controlCUE-knx-d		Mounting Accessories	
OpenTherm		controlCUE-dmx-d		Rack Mounting Kit 5	
CoolMasterNet		controlCUE-enocean-d		Rack Mounting Kit 7	
PJLink		Lightweight Controllers	24	Rack Mounting Kit 12	
Serial		smartCUE-relay		Rack Mounting Shelf	
Infrared		smartCUE-versatile		Cables and Adapters	
Input and Outputs		smartCUE-versatile-d		IR Adapter Set	
Weather Forecast		Wireless IP Interfaces	25	Opto-Input Adapter /i	
UPnP		nodeCUE-led4-w		Serial Cable 5-pin to RJ-14	
DLNA		nodeCUE-relay2-w		Serial Cable 3-pin to RJ-14	
SNMP Trap		Packages	26		
WolfVision CYNAP		Mobile Control Panel			
KODI		Elite-CV-M			
Sonos		Elite-CVD-M			
Philips Hue		Wired Tabletop Touch Panel			
Autonomic Controls Mirage		Elite-CV-5			
Honeywell Galaxy		Elite-C2-7			
Siemens EDP		Wired Built-In Touch Panel			
Amit		Elite-CVD-5B			
Tecomat PLC EPSNET		Elite-CVD-7B			
Enika Poseidon		Wired Button Panels	27		
Foxtron		Small Keypad 55 x 55 mm			
INELS		keypadCUE-55			
JABLOTRON		Built-In Models			
		keypadCUE-1G			
		keypadCUE-2G			
		keypadCUE-3G			

Commercial

applications



TRAINING ROOMS AND CLASSROOMS

In classrooms or training rooms the Cue System makes it possible to

- Simplify the operation of audio-visual equipment, lighting or HVAC.
- Carry out central supervision of all rooms in the building and administer technology in all rooms centrally (e.g. central switching off of electrical equipment at night including rooms where teachers may have forgotten to turn off some of the facilities).



MEETING ROOMS & CONFERENCE SPACES

The Cue System offers the following benefits for meeting & conference rooms

- Trouble-free running of presentations, automated one-touch control (for example, by pressing a button labelled PRESENTATION the whole room is set up into presentation mode – the projector is turned on, the projection screen rolls out, AV inputs are switched over to the presentation computer, appropriate light conditions are established, etc.).
- Nobody is put under stress of using complex technologies – the systems offers intuitive controlling with a minimum of control features.
- With the Cue System, the operator can control the entire technical equipment in the room (audio-visual technology, projectors, monitors, DVD players, lighting, heating, air-conditioning, window blinds, etc.) on one panel.
- Lighting can be controlled by pre-set light scenes which set all lighting devices to the desired light mood, simply by pressing a single button.
- Remote control of rooms – if the operator has any problems with running the device, he or she can call the technical centre, which can set things remotely.

- Remote and automated diagnosing, allowing for timely action in servicing (for example, the Cue System sends an e-mail to the service centre indicating that a lamp in the projector needs to be replaced or a filter has to be cleaned, or sends a warning that a device is not working properly).



MUSEUMS

The Cue System facilitates automated control of AV shows in museum expositions both by museum staff and visitors.

NETWORK OPERATION CENTRES (NOC)

The Cue System offers

- Automated operation of multi-screen systems.
- Automated control of distributing AV signals for visual display units.
- Controlling sources of AV signals, video cameras, recording equipment or sensors.
- Elimination of error during operation, simplified manipulation.

GOVERNMENT AND JUSTICE

The Cue System provides one-touch equipment to control AV technology such as audio and video conference facilities, voting equipment or recording devices in conference and court rooms. It dramatically reduces the number of technical staff needed for the controlling of those devices.

LECTURE HALLS

In large lecture halls, the Cue System makes it possible to

- Simplify the operation of all complex AV technologies currently in use, such as switching microphones, controlling sound systems, operating matrix switchers, video cameras and signal sources as well as running light effects – all this from one ergonomically designed touch panel.
- Distribute AV technology into several zones at venues where the lecture hall can be divided into more rooms by means of movable walls.
- Manage the distribution of audio-visual signals between several lecture halls.

HOTELS

In hotel spaces, the Cue System offers automated control of audio-visual equipment, lighting, heating, air-conditioning and other kinds of modern technology in meeting and conference rooms.



Residential

applications



WINDOW DRAPES, BLACKOUTS AND WINDOW TREATMENTS

The control system can automatically manipulate window blinds according to the intensity of sunlight. This helps to regulate illumination and temperature in the room. In summer it can reduce the cost of air-conditioning in rooms subject to direct sunlight. In case of strong wind the system ensures that window blinds and awnings are retracted, protecting them from damage.



SECURITY AND MONITORING CAMERA SURVEILLANCE

Thanks to the switch panels of the control system you can also control the intruder security systems. This means you do not need a separate keyboard for the security subsystem - all you need are the switch panels of the control system. The system can thus turn on the Presence Simulation when you leave and arm, or send you a message in case of any alarm. In addition, thanks to the touch panel of the control system, you can monitor anything picked up by the security cameras mounted in your house. In this way, for instance, you can keep an eye on your children playing around the swimming pool.



HEATING, VENTILATION AND AIR-CONDITION (HVAC) CONTROL

The control of heating and air-conditioning maintains thermal comfort while at the same time reducing energy consumption and therefore, costs. It is possible to programme suitable temperature modes for various days of the week or various times of the day, and also to establish an economy mode during your vacation. Heating and air-conditioning can be controlled for each room independently.

LIGHTING AUTOMATION

The control system enables you to control lighting by selecting appropriate illumination levels suited for a given type of activity. If you are watching TV, for example, the system sets up all lights in the room to prevent them from disturbing the picture while maintaining adequate light levels for the room. The lighting can be changed automatically, depending on the time of the day.

MULTIZONE AUDIO & VIDEO CONTROL

With the help of the touch panel or keyboards you can play your favourite music or turn on your chosen TV or radio programme, setting the volume to the desired level. The control system can automate these procedures for you. For example, it can turn on the news in the bathroom after you get up, switch on relaxing music when you come home, etc.



HOME THEATRE CONTROL

The control system enables you to automate and simplify the operation of home audio-visual technology, eliminating the use of multiple remote controls. Pressing a single button WATCH MOVIE on your touch panel, for example, automatically switches on the TV, DVD player and the audio system. The appropriate inputs are selected, lighting in the room is set to the desired light mood and if it is sunny outside, the curtains are drawn.

PERSONALIZED SEQUENCE OF ACTIONS

The control system can automatically carry out preset actions as required by the user. For example, after you come home and disarm the security system, the control system can turn on the lights and heating and switch on background music. TV news comes on at precisely the right time. The system can also record your regular activities during the day and use this data to simulate your presence in the house during your absence, thus discouraging uninvited visitors.



AUTOMATED ENTRYWAYS AND GATES CONTROL

The connection of gates, doors and windows to the control system facilitates the automated unlocking of doors when you come home as well as automated locking when you leave. Should you forget to close any windows, the system will remind you.

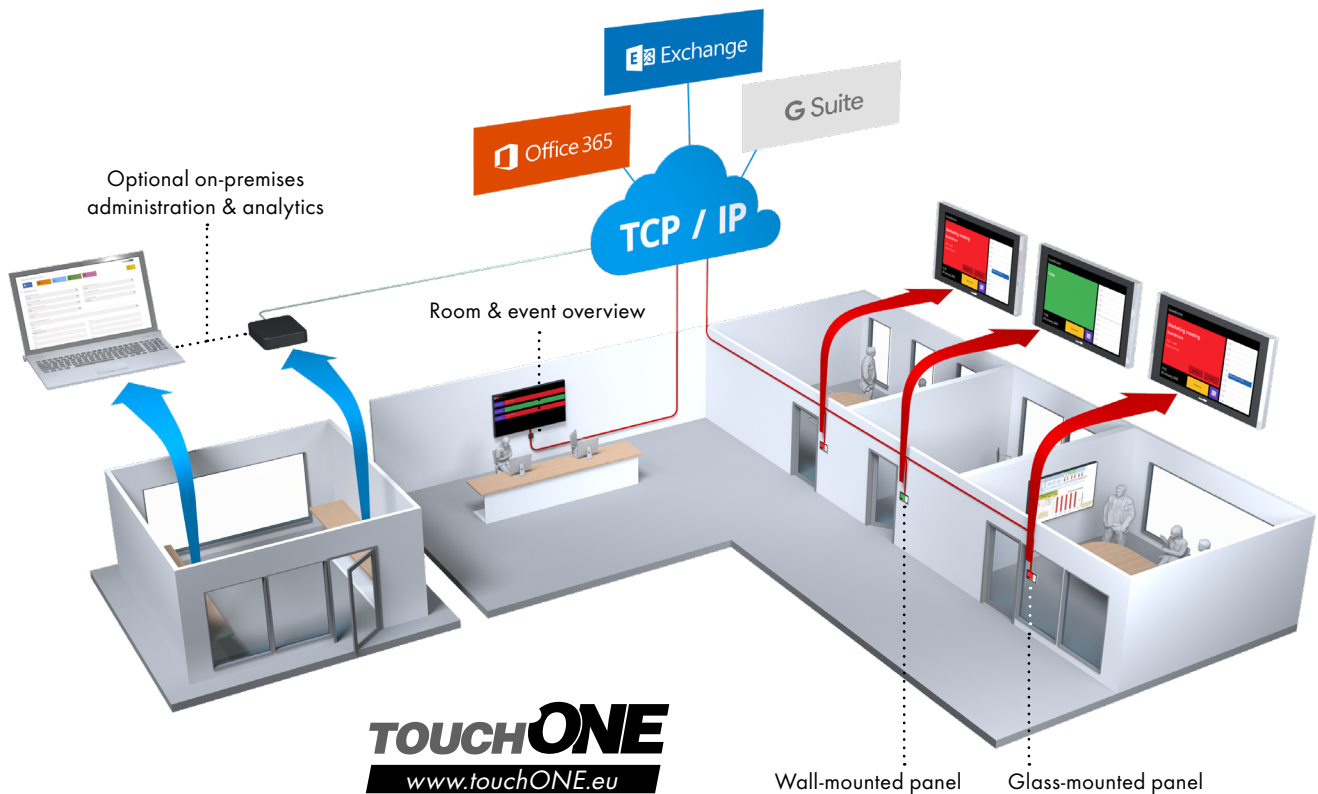


REMOTE ACCESS TO ALL HOME SYSTEMS

You can access your home remotely via Internet, cloud or SMS text messages. Your home web site will enable you to monitor the current state of your house including interior and exterior temperatures, turning on the heating, recording your favourite TV programme or watering the lawn.

Reservation System

Multilingual reservation system for boardrooms, conference & lecture rooms, auditoriums, classrooms, sports centres as well as any other meeting places.



HARDWARE

- Room entrance touch panel installation
- Touch panel diagonal sizes 4.3", 7" & 12.1"
- Built-in or on-wall (glass wall) installation
- Red and green room status indicators
- Plug & play solution
- Simple installation and configuration
- No programming and software required
- Single Ethernet cable connection and Power over Ethernet power supply
- Low consumption of electricity and enhanced power saving features

COMPATIBILITY & TECHNOLOGIES

- Works as a client with following systems (subscriptions are not a part of delivery)
 - Microsoft Office 365 - Business, Education, Enterprise or Government plans
 - Microsoft Exchange Server 2007 | 2010 | 2013 | 2016
 - Google G Suite
- Dedicated calendar account for each room
- Server/touch panel encrypted communication
- Standard applications, i.e. Microsoft Outlook used for meeting room management
- 802.1X authentication mechanism supported
- Support for communication through a proxy server

USER INTERFACE LANGUAGES

- Czech, Chinese, Danish, Dutch, English, Finnish, French, German, Greek, Italian, Latvian, Norwegian, Polish, Portuguese, Russian, Spanish, Swedish
- Other languages on demand

TOUCH PANEL FUNCTIONS

- Displays room name & company logo
- Room occupation or availability indication
- Displayed current meeting
- Meeting details available
- Room calendar browsing
- Current meeting extension and termination
- Easy room reservation
- Search for other available rooms
- Meeting confirmation to eliminate unused reserved rooms
- Automated meeting confirmation with occupancy sensors
- Support for catering and cleaning requests
- Support for various service requests
- Support for room occupancy sensors usage
- PIN code authorization
- Room equipment control using simple integration with the CUE control system
- Various color skins and layouts

ROOM & EVENT OVERVIEW

- Unit touchONE-overview with HDMI output for large format display devices
- Designed for reception, entrance hall etc.
- Single room mode for room calendar and welcome screen display

ADMINISTRATION & ANALYTICS

- Stand-alone centralized management from any touch panel
- Whole system administration from a single intuitive web interface
- Reservation statistics & analysis for more efficient room usage
- Optional enhanced on-premises web-based administration, analytics and statistics

Reservation System

BUILT-IN ROOM RESERVATION PANELS



touchONE-5-B



touchONE-7-B



touchONE-12-B

Product code	CS0493	CS0494	CS0495
Display type	Color IPS LCD, LED backlit	Color a-Si TFT LCD, LED backlit	Color a-Si TFT LCD, LED backlit
Display size	4.3" (109 mm) diagonal	7" (177.8 mm) diagonal	12.1" (307.3 mm) diagonal
Resolution	800 x 480 pixels	1280 x 800 pixels	1280 x 800 pixels
Viewing angle	160° horizontal, 160° vertical	160° horizontal, 160° vertical	160° horizontal, 160° vertical
Touch technology	Projected capacitive	Projected capacitive	Projected capacitive
Sensors	Light and proximity	Light and proximity	Light and proximity
LED indicators	None	Green for free room, red for occupied room	Green for free room, red for occupied room
Network	Wired 10/100 BaseT Ethernet 802.1X authentication mechanism supported Proxy server support	Wired 10/100 BaseT Ethernet 802.1X authentication mechanism supported Proxy server support	Wired 10/100 BaseT Ethernet 802.1X authentication mechanism supported Proxy server support
Power supply	PoE, IEEE 802.3af / Class 0	PoE, IEEE 802.3af / Class 0	PoE+, IEEE 802.3at / Class 4
Enclosure	Aluminium, edge-to-edge front glass, protection IP30	Aluminium, edge-to-edge front glass, protection IP30	Aluminium, edge-to-edge front glass, protection IP30
Installation	Compatible with standard electrical wall boxes. Recommended height 150 cm	Compatible with standard electrical wall boxes Recommended height 150 cm	Compatible with standard electrical wall boxes Recommended height 150 cm
Dimensions	136 x 81 x 11 mm when installed, full depth 37 mm	199 x 120 x 16 mm when installed, full depth 39 mm	320 x 200 x 22 mm when installed, full depth 47 mm
Weight	0.3 kg	0.6 kg	2.0 kg

ON-WALL ROOM RESERVATION PANELS



touchONE-7-M



touchONE-12-M

Product code	CS0528	CS0529
Display type	Color a-Si TFT LCD, LED backlit	Color a-Si TFT LCD, LED backlit
Display size	7" (177.8 mm) diagonal	12.1" (307.3 mm) diagonal
Resolution	1280 x 800 pixels	1280 x 800 pixels
Viewing angle	160° horizontal, 160° vertical	160° horizontal, 160° vertical
Touch technology	Projected capacitive	Projected capacitive
Sensors	Light and proximity	Light and proximity
LED indicators	Green for free room, red for occupied room	Green for free room, red for occupied room
Network	Wired 10/100 BaseT Ethernet 802.1X authentication mechanism supported Proxy server support	Wired 10/100 BaseT Ethernet 802.1X authentication mechanism supported Proxy server support
Power supply	PoE, IEEE 802.3af / Class 0	PoE+, IEEE 802.3at / Class 4
Enclosure	Aluminium, edge-to-edge front glass, protection IP30	Aluminium, edge-to-edge front glass, protection IP30
Installation	On-wall, e.g. glass wall, no wall drilling or cutting needed Recommended height 150 cm	On-wall, e.g. glass wall, no wall drilling or cutting needed Recommended height 150 cm
Dimensions	199 x 120 x 32 mm	320 x 200 x 32 mm
Weight	0.8 kg	2.2 kg

ROOM & EVENT OVERVIEW



touchONE-overview

Product code	CS0510
Display type	HDMI output for display connection
Resolution	1920 x 1080 pixels
LED indicators	Power
Network	Wired 10/100/1000 BaseT Ethernet 802.1X authentication mechanism supported Proxy server support
Power supply	5 VDC, power input jack
Enclosure	Metal chassis, fanless and slim design
Installation	Built-in, desktop
Dimensions	118 x 101 x 24 mm
Weight	0.5 kg

ADMINISTRATION AND ANALYTICS



touchONE-manager

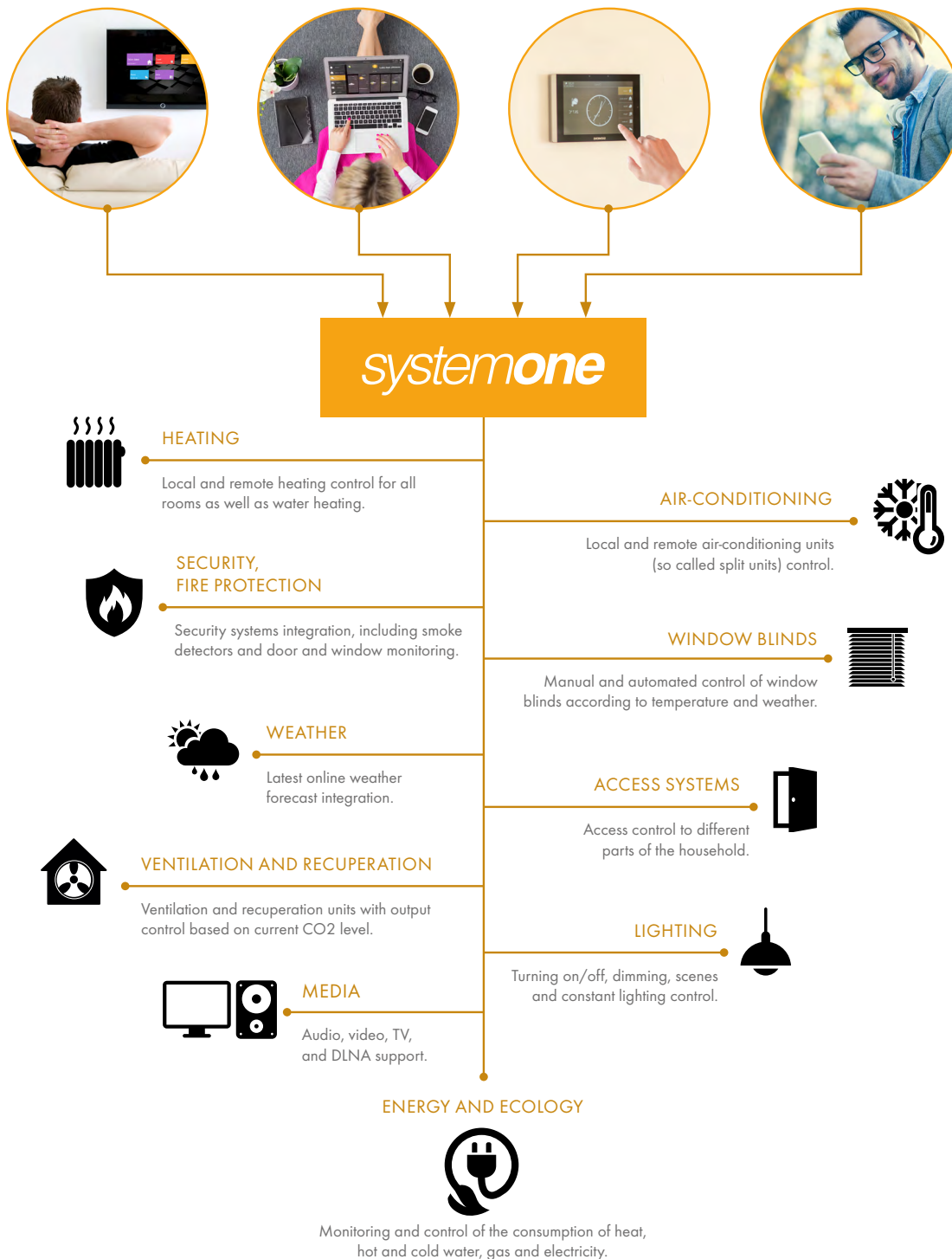
Product code	CS0537
Display type	HDMI output, displays current IP settings only
Resolution	1920 x 1080 pixels
LED indicators	Power
Network	Wired 10/100/1000 BaseT Ethernet 802.1X authentication mechanism supported Proxy server support
Power supply	5 VDC, power input jack
Enclosure	Metal chassis, fanless and slim design
Installation	Built-in, desktop
Dimensions	118 x 101 x 24 mm
Weight	0.5 kg

Home Automation

All home technologies joined together into a single system.

www.systemone.eu

- Standard basic sets for various types of heating control
- On-wall touch panel with standardized graphic user interface
- DLNA functionality, security and other home automation systems integration
- Licenses for Apple iOS, Android and MS Windows devices
- Cloud services available for remote monitoring and control
- Room units for temperature and air quality control
- Demand-controlled ventilation
- Shading and constant lighting control
- Communications based on KNX and Ethernet standards
- Designed with Siemens

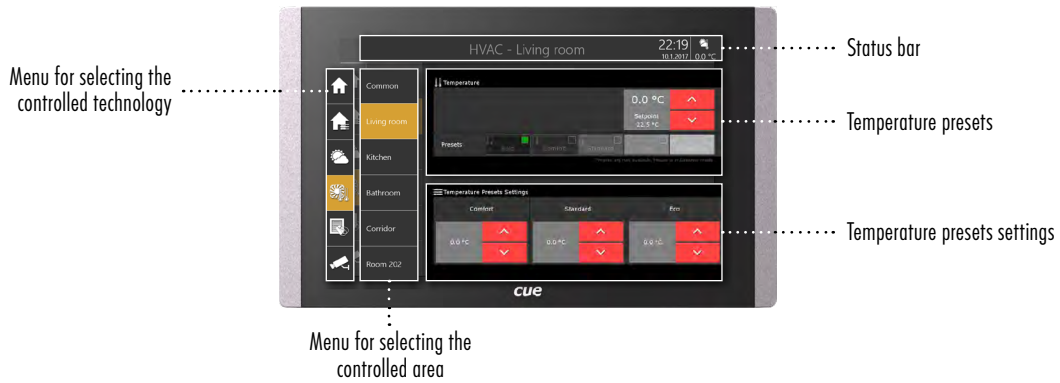


Home Automation

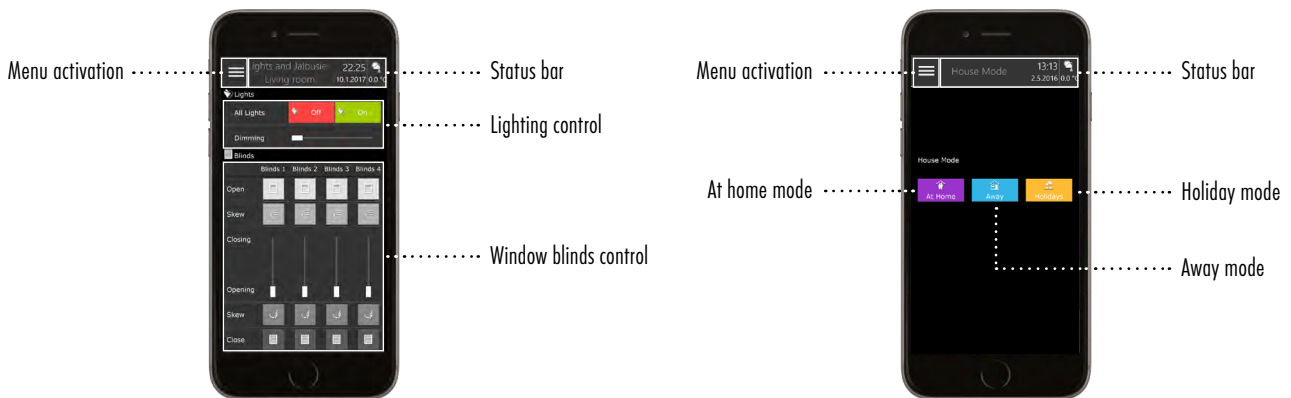
Easy control from anywhere through anything.

www.systemone.eu

Touch panel sample control application



Smart phone sample control application



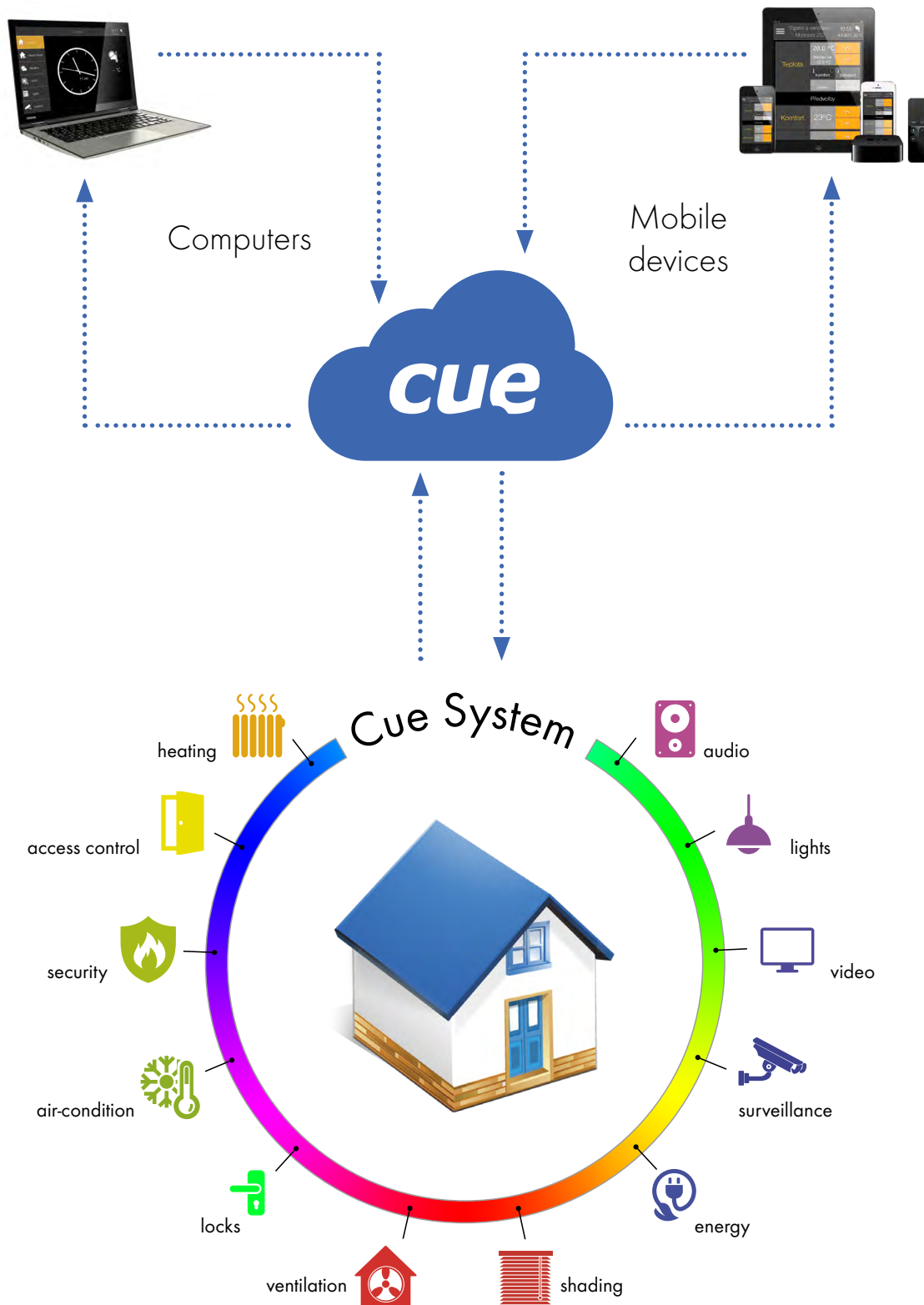
TV sample control application



Cloud-based Management

Access your Cue System from anywhere.
This cloud-based solution saves time, money, effort and makes your life enjoyable.

my.cuesystem.com



Cloud-based Management

New solution for easy, fast and efficient site management.
Suitable for home & residential as well as for business or professional applications.

my.cuesystem.com

GENERAL

- Simple, flexible and secure on-demand cloud solution
- Available through standard Internet-enabled devices
- No public IP address required for site
- Secure communication
- 24/7/365 availability

USER ACCOUNTS

- Available for all users
- Easy access with just e-mail & password
- Simple site creation and deletion
- User friendly site management
- Software license management

SITE MANAGEMENT

- Site = Cue System installation
- Site has unique identification but can have friendly name
- Site details: description, street, city, state, country, post code, picture, etc.
- Site administration sharing
- Software projects and licenses

SOFTWARE PROJECTS

- Automated site project upgrade (without personal presence)
- Costs reduction and upgrade acceleration
- Project upgrade scheduling
- Cue Visual Composer project programming
- Project upload to cloud

FIRMWARE MANAGEMENT

- Automated firmware upgrade (without personal presence)
- The latest firmware version guaranteed
- Costs effective firmware upgrade acceleration
- Firmware upgrade scheduling available
- Newest firmware versions regularly managed by manufacturer

WEB USER INTERFACE

- Web based interface for simple and easy monitoring and control
- Typical for site mode (day, night, vacation), heating, energy, security, etc.
- Accessed from any device via Internet browser
- Site communication in open-source data format, e.g. JSON
- Modules for site programming available

MOBILE APPLICATIONS

- Applications for mobile devices and PCs available on cloud
- Free appCUE for Apple iOS, Android or MS Windows required
- Easy and intuitive application setup
- Simple access from any Internet connected device
- Software license available on the cloud

SOFTWARE FLOATING LICENSES

- Tool for license registration
- Flexible licenses management
- License transfer available between users and sites
- In most cases used for appCUE
- Floating licenses available for authorized users

SITE MONITOR

- Available anywhere with Internet-enabled mobile device or PC
- Real-time site data
- Typical for site mode (day, night, vacation), heating, ventilation, energy, security, locks, doors, gates, etc.
- Standardized or customized user interface for appCUE

SITE CONTROL

- Site control from anywhere with Internet-enabled mobile device or PC
- Typical for site mode setting (day, night, vacation), heating, ventilation, security, locks, doors, gates, lights, etc.
- Remote preset activation of multiple devices
- Standardized or customized user interface for appCUE

Programming Tools

OVERVIEW

Cue Visual Composer (CVC) is a new generation All-In-One software for control application programming. CVC is innovative mainly due to its unique concept. Touch panels and controllers are programmed in the same way, which makes it possible to use touch panels as fully functional control units. One universal programming language XPL2 allows to program graphical objects, touch panel layouts, device drivers and other parts of control application. Effective programming is achieved by visual programming approach with drag and drop, advanced editing technique IntelliSense, export and import of ready to use pieces of program and more. Application language localization and Unicode character support are inherent parts of CVC, so it does not require any programming effort. Any part of source code can be protected by a password to protect the author's intellectual property and also can be licensed to a specific hardware. Control application runs on CUE touch panels, controllers, Apple iOS devices, Android devices and on Microsoft Windows computers.

XPL² PROGRAMMING LANGUAGE

Cue Visual Composer thus becomes an open platform for a large group of application programmers and makes an important contribution to the development of modern graphical user interfaces. The XPL² programming language itself is tailored to the needs of control systems used to integrate various technologies. It includes a complete set of powerful commands that enable system integrators to achieve an effective, robust and easily maintainable code.

PREPROGRAMMED BUILDING BLOCKS

Preprogrammed Building Blocks dramatically increase productivity in the preparation of control applications using Cue Visual Composer.

Currently CVC offers following types:

- Graphic Collection is a set of ready to use graphic objects which allows to prepare touch panel graphical interface.
- Device Driver is a part of XPL² code which communicates with controlled device.
- Applet is a part of program that performs specific task and it runs within the context of a larger program. For example Sunrise/Sunset Timer, Simple Scheduler.
- Widget is a small full functional application that can be inserted into Cue Visual Composer project.

GRAPHIC OBJECTS

Graphic objects are programmed at the level of standard XPL² language which includes graphical API (Application Programming Interface). When designing the touch panel graphic layout, application programmers therefore do not depend on a fixed set of objects delivered by the software manufacturer but are free to create their own, often very sophisticated objects or whole functional blocks. Runtime's Resize-On-Demand technology for graphic resources dramatically simplifies creating of graphical objects. It is not necessary to prepare special graphics for different objects sizes. Runtime's High Color Enhancer improves the subjective perception of color depth. On touch panels with 16-bit color depth the application graphics looks as if it had 24-bit color depth.

Software installation includes Cue Symbol Font with more than 130 symbols covering the needs of most control applications. The symbol set is grouped into Transport, Arrows & Movements, AV / TV Control, Indicators etc.

Software installation includes more than 140 black / white icons (bitmaps) covering most frequently used symbols and pictures.

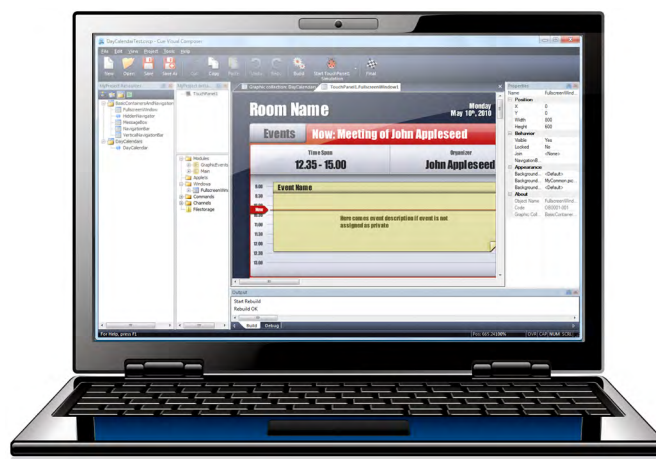
SIMULATION AND DEBUG

CVC and all runtimes for Microsoft Windows based computers can utilize multi-core processors. CVC offers many various ways how to debug and test applications, which significantly shortens the development cycle. The whole project can be simulated anytime on a computer or tested on real hardware units using their control ports.

For every unit in the project this debug mode can be set individually and both simulation and real unit testing can be combined. CVC displays debug messages from simulated units and from real units too.

FIRMWARE

Firmware update On-The-Fly is implemented for all CUE touch panels and controllers. All firmware is part of CVC installation. If CVC recognizes an older firmware version, it automatically updates firmware before debugging or final project uploading.



Cue Visual Composer

Product code	PT0007
Compatibility	Microsoft® Windows 7 8 8.1 10 (32/64-bit)

Technologies Integration

OVERVIEW

As the market gets filled with modern-day technological systems and gadgets, the range of DIY systems for home automation is really wide.

Nowadays, you can get anything online - from wireless audio system and smart light bulbs to a phone-controlled kettle. The dream of a modern person, you might think. But here comes the catch: each of these products comes with its own mobile device application. No matter whether you are a fan of Apple iOS, Android or MS Windows, these products are compatible with every common operating system. They are, however, not inter-compatible.

In practice this means that the more of these smart products you have at home, instead of having less work, you will have even more work every time you want to leave or return home. That is because your mobile device needs to contain many different applications for many different products and you have to open each of them in order to control all the smart technologies at your home. Not to mention that every application has a different design and way of controlling the affiliated product.

Moreover, it is not possible to automate the tasks based on specific triggers, such as date, time, temperature, the actual weather etc.

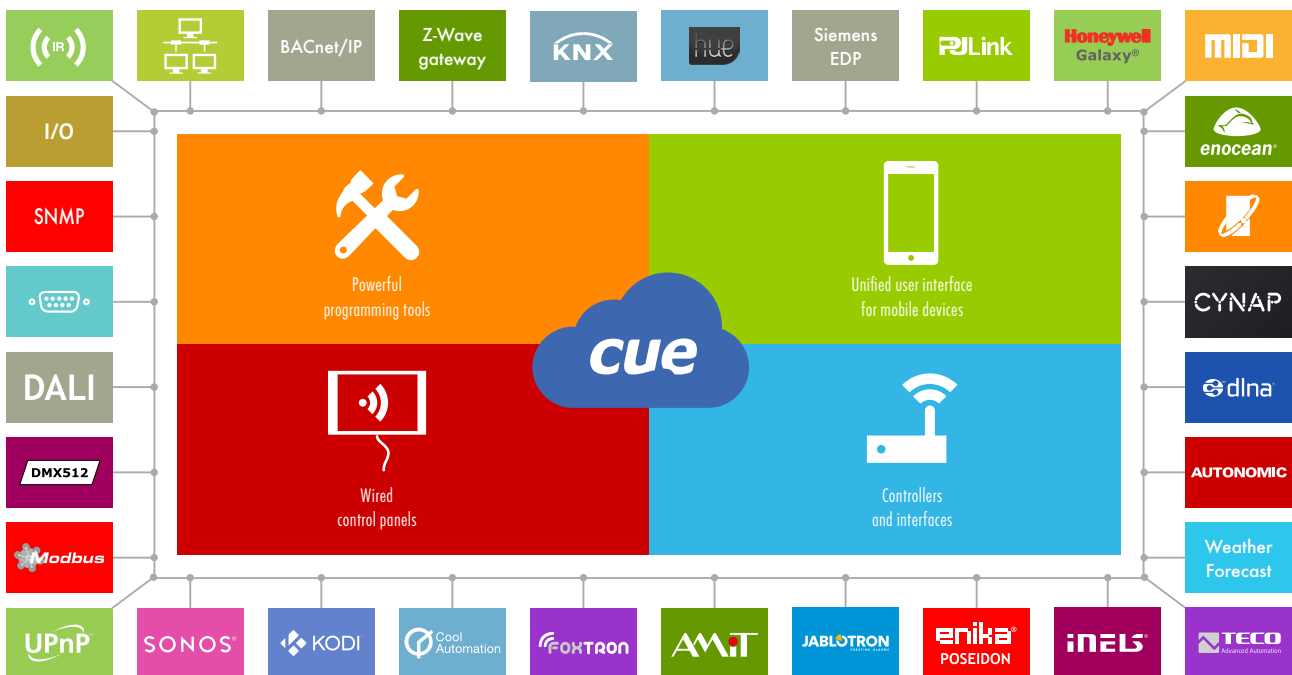
Vast majority of the automation technologies all around the world today (however good they may be) lack one very important feature - the integration of other similar technologies. That is the reason why people often experience problems while trying to create an automated environment.

Are you looking for a solution which is both smart and elegant? In that case the CUE System is exactly what you need!

FEATURES

Based on the advanced hardware and software solution, the Cue System is able to

- Integrate different devices, protocols and systems based on worldwide technologies KNX, DALI, DMX512, Modbus, EnOcean, DLNA, Philips HUE, Sonos and many others
- Provide a straightforward and secure integration;
- Enable data exchange between devices and systems;
- Control and automate all technologies;
- Visualize all technologies on mobile devices and touch panels;
- Control all technologies from a single application on your mobile device and thus eliminate all the individual applications affiliated with separate technologies;
- Control all technologies using wireless/tabletop/wall touch panels, keypads, button panels, etc.
- Trigger all technologies by date, time, sunrise/sunset, temperature etc.
- Offer convenient and consistent operation;
- Offer a high level of flexibility owing to extensive support of various standards;
- Simulate presence at home by turning on/off the lights, AV technologies, window blinds etc. based on a schedule which can emerge from the real behaviour of the occupiers
- Offer not only mobile device applications, but also built-in touch panels and control units.



Supported Technologies

IT Standard Technologies



- Supported protocols: ARP, DHCP, DLNA, ICMP, DNS, FTP, HTTP, HTTPS, IPv4, KNXnet/IP, LDAP, NTP, POP3, RTSP, UPnP, DLNA, SMTP, SNMP trap, SSDP, SSH, SSL, TCP/IP, Telnet, TLS, UDP/IP, UPnP, Wake-On-LAN, Web Server
- Software: build in firmware or device drivers

DMX512

DMX512

- Digital MultipleX, EIA-485 physical layer
- Standard for stage lighting, effects, interior and architectural lighting
- Connection: dedicated port on controlCUE-dmx-d
- Software: API functions and device drivers

Modbus TCP | Modbus Serial



- Open standard for industry, buildings, traffic, energy, etc.
- Client-server communication for Modbus TCP
- Master-slave communication for Modbus Serial
- Connection: IP or serial port
- Software: device drivers

BACnet/IP

BACnet/IP

- ASHRAE building automation and control networking protocol
- Cue System monitoring by building management systems (BMS)
- Integration of HVAC, lighting, access control, fire detection, etc.
- Connection: IP port
- Software: device drivers

MIDI

MIDI

- Musical Instrument Digital Interface
- Electronic musical instrument industry communication
- Also used for show control, theatre lighting, effects, etc.
- Connection: serial port
- Software: device drivers

CoolMasterNet



- HVAC system control - mode, fan, setpoint, swing
- Fully compatible with air conditioning indoor units by Daikin, Mitsubishi, Toshiba, Fujitsu, LG, Hitachi, Gree and similar
- Connection: IP or serial port
- Software: device drivers

Serial



- RS-232/422/485 standards
- Bi-directional communication for control and feedbacks
- Typical for AV switchers, projectors, TVs, industry, etc.
- Connection: serial port, IR/serial output or versatile port
- Software: device drivers

Input and Outputs

I/O

- Digital, voltage and resistance inputs, digital pulse counter, current loop, temperature and light sensors
- Digital outputs, analog outputs, low and high relays, dimming outputs, etc.
- Software: device drivers

DALI

DALI

- Digital Addressable Lighting Interface
- Data protocol and transport mechanism for light control
- Cue System as IP backbone between 64 devices subnets
- Connection: dedicated port on controlCUE-dali-d
- Software: API functions and device drivers

KNX | KNXnet/IP



- Open standard conforming to EN 50090 and ISO/IEC 14543
- Twisted pair cable, IP or RF for data transmission
- Connection: dedicated port on controlCUE-knx-d for KNX TP (twisted pair), IP port for KNXnet/IP
- Software: API functions and device drivers

EnOcean



- RF standard for sustainable building projects
- Self-powered RF as a core technology
- Connection: dedicated RF port on controlCUE-enocean-d or controlCUE-hub
- Software: API functions and device drivers

Z-Wave Gateway

Z-Wave gateway

- Solution for Vera Z-Wave gateway
- Switch power, dimming, scene controllers, temperature sensors, setpoints, energy meters and security sensors integration
- Connection: IP port
- Software: device drivers

OpenTherm



- Communication for heating systems
- Point-to-point master (thermostat or controller) / slave (boiler) protocol
- Connection: serial port
- Software: device driver available on request

PJLink

PJLink

- Unified protocol for data projectors control
- IP based
- Vendor independent
- Connection: IP port
- Software: device driver

Infrared



- One-way communication, no feedback from controlled device
- CUE controllers equipped with IR capture
- IR adapters or blasters for transmitting
- Connection: IR/serial output, versatile port
- Software: device drivers

Weather Forecast

Weather Forecast

- Weather data access for control applications
- Standard HTTP requests, returns in XML or JSON formats
- Ready to use widget
- Connection: IP port, Internet access requested
- Software: widget - device driver and graphic object

Supported Technologies

UPnP



- Universal Plug and Play networking protocols for device discovering and communication establishing
- Server, renderer and controller device types
- Connection: IP port
- Software: widget - device driver and graphic objects

SNMP Trap



- Simple Network Management Protocol for IP device monitoring
- Monitored device sends the SNMP trap without being asked in order to notify the managing system of an event.
- Connection: IP port
- Software: device driver for SNMP trap sending

KODI



- Media player for Linux, OSX, Windows, iOS, and Android
- Videos, music, pictures, etc. from local storage or Internet
- UPnP compatible
- Connection: IP port
- Software: widget - device driver and graphic objects

Philips Hue



- Fully customizable light bulbs
- Up to 16 million colors by combining three LEDs
- Up to 50 Hue light bulbs wirelessly connected to the IP bridge
- Connection: IP port
- Software: device driver

Honeywell Galaxy



- Integrated intruder and access control security solution
- Monitoring and control of detectors and other subsystems connected to security central units
- Connection: IP or serial port
- Software: device drivers

Amit



- Control systems for building and industrial automation
- Ethernet interface
- Communication based on Modbus TCP
- Connection: IP port
- Software: device driver

Enika Poseidon



- Wireless system for intelligent electrical installation
- Switches, window blinds receivers, light controllers, dimmers and other units controlled through Modbus TCP
- Connection: IP port
- Software: device driver

INELS



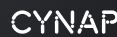
- Wired and wireless system for intelligent electrical installation
- Transmitters and actuators monitored and controlled through Ethernet interface
- Connection: IP port
- Software: device driver

DLNA



- Digital Living Network Alliance
- Inter-operability guidelines for digital media sharing between multimedia devices - NAS, TVs, network speakers, etc.
- Connection: IP port
- Software: widget - device driver and graphic objects

WolfVision CYNAP



- Collaboration system control
- Direct control from touch panel, no processor needed
- Touch panel and mobile application available
- Connection: IP port
- Software: complete application incl. device driver and user interface

Sonos



- Hi-Fi wireless speakers and audio components
- Digital music collection in one app
- Control from any device
- Connection: panel IP port
- Software: widget - device driver and graphic objects

Autonomic Controls Mirage



- Media server control from any CUE user interface
- GUI for touch panels, mobile devices and computers
- Integration based on IP protocols Telnet and HTTP
- Connection: IP port
- Software: widget - device driver and graphic objects

Siemens EDP



- Enhanced Datagram Protocol for alarm / access systems
- Monitoring and control of detectors and other subsystems connected to security central units
- Connection: IP port
- Software: device driver

Tecomat PLC EPSNET



- Automation system interfaced through Ethernet
- Sending and receiving data concerning the state of variables via the EPSNET protocol
- Connection: IP port
- Software: set of device drivers

Foxtron



- Control interfaces for intelligent electrical installation
- Switching units, drivers, dimmers and converters interfaced through various communication standards
- Connection: DALI, KNX, DMX and serial port for PEX
- Software: device driver

JABLOTRON



- Security system
- Monitoring and control of detectors and other subsystems connected to security central units
- Connection: serial port
- Software: device driver

Wired Touch Panels

- Ethernet IP enabled touch panels for tabletop usage
- Application and license server for mobile applications
- Full motion streaming video preview
- Colors 32-bit (True Color), transparency 8-bit Alpha blending
- Real time clock (RTC) for scheduling applications
- Bi-directional control of any IP enabled products through Ethernet port
- Easy network integration
- Power over Ethernet (PoE)
- Web server and Admin Web for setup through a standard web browser
- Power supply and Ethernet cable included

Built-In Models



touchCUE-5-B



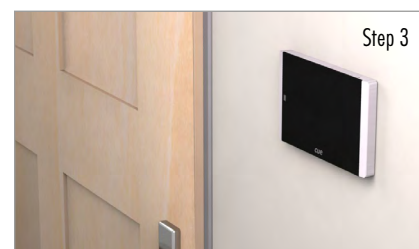
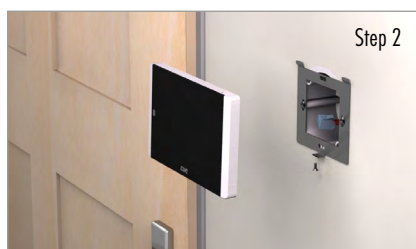
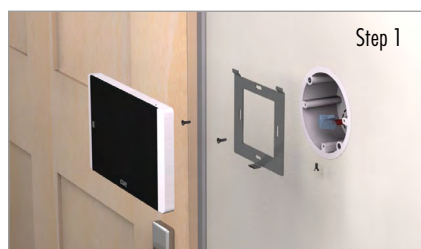
touchCUE-7-B



touchCUE-12-B

Product code	CS0372	CS0452	CS0467
Display type	Color IPS LCD with LED backlight	Color a-Si TFT LCD with LED backlight	Color a-Si TFT LCD with LED backlight
Display size	4.3" (109 mm) diagonal	7" (177.8 mm) diagonal	12.1" (307.3 mm) diagonal
Resolution	800 x 480 pixels	1280 x 800 pixels	1280 x 800 pixels
Viewing angle	160° horizontal, 160° vertical	160° horizontal, 160° vertical	160° horizontal, 160° vertical
Touch overlay	Projected capacitive	Projected capacitive	Projected capacitive
Sensors	Light and proximity	Light and proximity	Light and proximity
Audio	Microphone and speakers	Microphone and speakers	Microphone and speakers
RAM / Non-volatile flash	512 MB / min. 4 GB	512 MB / min. 4 GB	512 MB / min. 4 GB
Network	Wired 10/100 BaseT Ethernet 802.1X authentication mechanism supported Proxy server support	Wired 10/100 BaseT Ethernet 802.1X authentication mechanism supported Proxy server support	Wired 10/100 BaseT Ethernet 802.1X authentication mechanism supported Proxy server support
Power supply	PoE, IEEE 802.3af / Class 0	PoE, IEEE 802.3af / Class 0	PoE+, IEEE 802.3at / Class 4
Enclosure	Aluminium, edge-to edge front glass Protection IP30	Aluminium, edge-to edge front glass Protection IP30	Aluminium, edge-to edge front glass Protection IP30
Installation	Built-in Compatible with standard electrical wall boxes Recommended height 150 cm	Built-in Compatible with standard electrical wall boxes Recommended height 150 cm	Built-in Compatible with standard electrical wall boxes Recommended height 150 cm
Dimensions	136 x 81 x 11 mm when installed, full depth 37 mm	199 x 120 x 16 mm when installed, full depth 39 mm	320 x 200 x 22 mm when installed, full depth 47 mm
Weight	0.3 kg	0.6 kg	2.0 kg
Included accessories	PoE power supply, Ethernet cable, Wall mounting adapter	PoE power supply, Ethernet cable, Wall mounting adapter	PoE+ power supply, Ethernet cable, Wall mounting adapter

SIMPLE, THREE STEPS INSTALLATION



Wired Touch Panels

Tabletop Models



touchCUE-5



touchCUE-7



touchCUE-12

Product code	CS0371	CS0451	CS0466
Display type	Color IPS LCD with LED backlight	Color a-Si TFT LCD with LED backlight	Color a-Si TFT LCD with LED backlight
Display size	4.3" (109 mm) diagonal	7" (177.8 mm) diagonal	12.1" (307.3 mm) diagonal
Resolution	800 x 480 pixels	1280 x 800 pixels	1280 x 800 pixels
Viewing angle	160° horizontal, 160° vertical	160° horizontal, 160° vertical	160° horizontal, 160° vertical
Touch overlay	Projected capacitive	Projected capacitive	Projected capacitive
Sensors	Light and proximity	Light and proximity	Light and proximity
Audio	Microphone and speakers	Microphone and speakers	Microphone and speakers
RAM / Non-volatile flash	512 MB / min. 4 GB	512 MB / min. 4 GB	512 MB / min. 4 GB
Network	Wired 10/100 BaseT Ethernet 802.1X authentication mechanism supported Proxy server support	Wired 10/100 BaseT Ethernet 802.1X authentication mechanism supported Proxy server support	Wired 10/100 BaseT Ethernet 802.1X authentication mechanism supported Proxy server support
Power supply	PoE, IEEE 802.3af / Class 0	PoE, IEEE 802.3af / Class 0	PoE+, IEEE 802.3at / Class 4
Enclosure	Aluminium, edge-to edge front glass Protection IP30 Integrated tabletop stand	Aluminium, edge-to edge front glass Protection IP30 Integrated tabletop stand	Aluminium, edge-to edge front glass Protection IP30 Integrated tabletop stand
Dimensions	136 x 81 x 73 mm	199 x 115 x 97 mm	320 x 192 x 153 mm
Weight	0.4 kg	0.8 kg	2.4 kg
Included accessories	PoE power supply, Ethernet cable	PoE power supply, Ethernet cable	PoE+ power supply, Ethernet cable

On-Wall Models



touchCUE-7-M

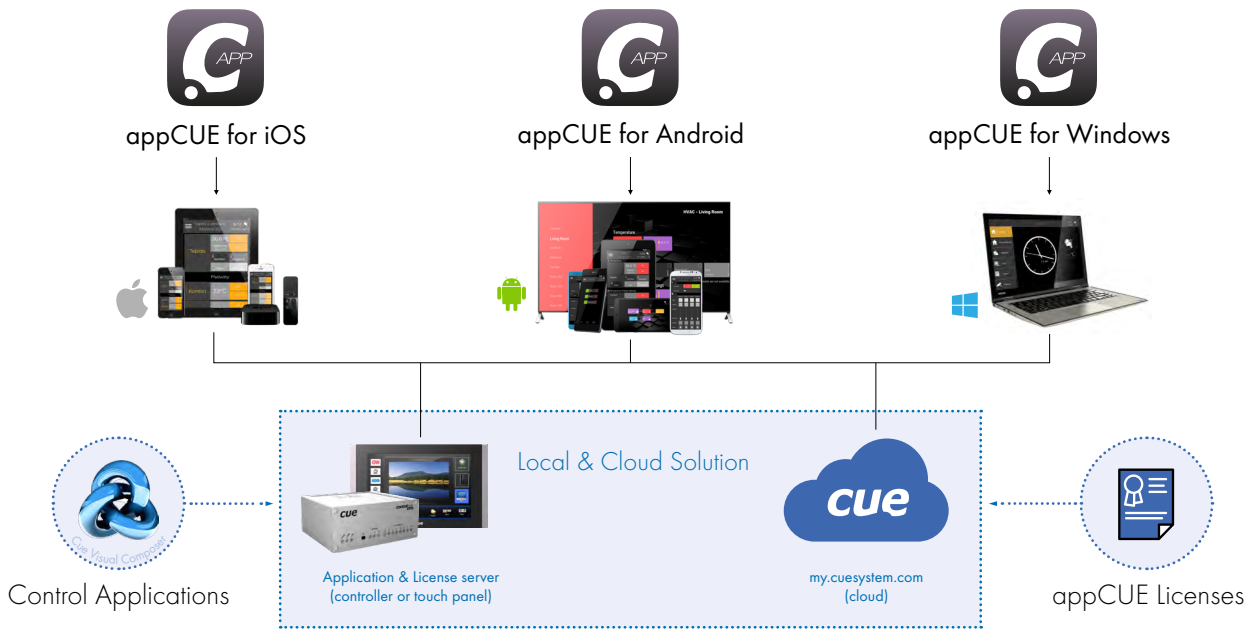


touchCUE-12-M

Product code	CS0539	CS0540
Display type	Color a-Si TFT LCD with LED backlight	Color a-Si TFT LCD with LED backlight
Display size	7" (177.8 mm) diagonal	12.1" (307.3 mm) diagonal
Resolution	1280 x 800 pixels	1280 x 800 pixels
Viewing angle	160° horizontal, 160° vertical	160° horizontal, 160° vertical
Touch overlay	Projected capacitive	Projected capacitive
Sensors	Light and proximity	Light and proximity
Audio	Microphone and speakers	Microphone and speakers
RAM / Non-volatile flash	512 MB / min. 4 GB	512 MB / min. 4 GB
Network	Wired 10/100 BaseT Ethernet 802.1X authentication mechanism supported Proxy server support	Wired 10/100 BaseT Ethernet 802.1X authentication mechanism supported Proxy server support
Power supply	PoE, IEEE 802.3af / Class 0	PoE+, IEEE 802.3at / Class 4
Enclosure	Aluminium, edge-to edge front glass Compatible with VESA standard 75 mm x 75 mm Protection IP30	Aluminium, edge-to edge front glass Compatible with VESA standard 75 mm x 75 mm Protection IP30
Installation	Multisurface, eg. glass wall installation Recommended height 150 cm	Multisurface, eg. glass wall installation Recommended height 150 cm
Dimensions	199 x 120 x 23 mm	320 x 200 x 32 mm
Weight	0.8 kg	2.2 kg
Included accessories	PoE power supply, Ethernet cable	PoE+ power supply, Ethernet cable

Mobile Solution

- Runtimes for control applications running on Apple iOS, Android and MS Windows
- Control applications and licenses downloaded from local application & license server (touch panel or controller) or from cloud
- Supports the execution of programs written in XPL² language
- Enables use any mobile device as a Cue System control panel
- Suitable addition to CUE control panels and controllers
- GUI applications designed in Cue Visual Composer
- System communication based on IP using CUEnet² protocol
- Any IP operated device can be controlled directly
- Complete set of XPL² IP commands available



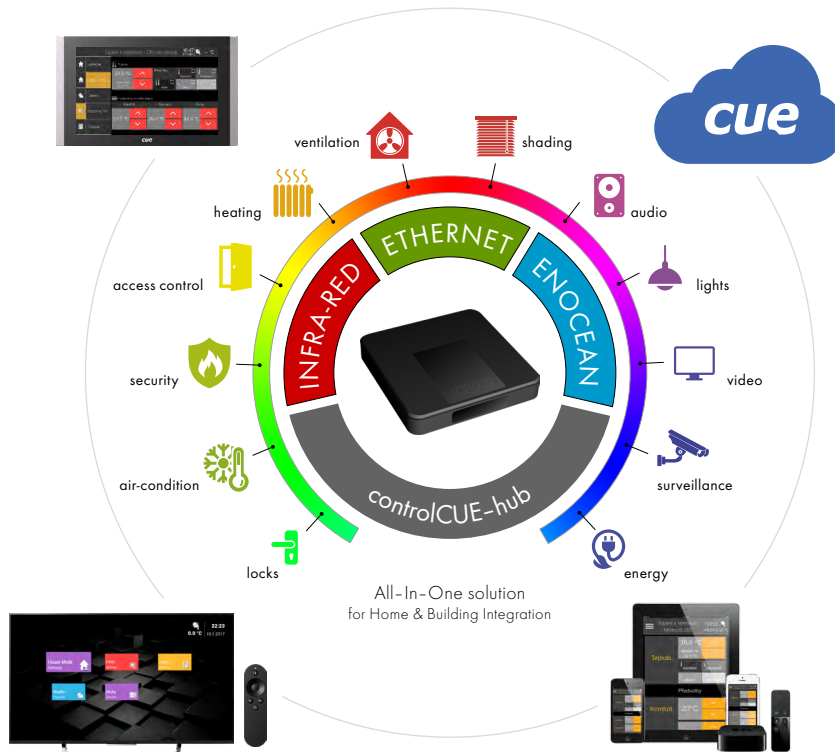
appCUE

Product code	CS0485
Operating systems	Apple iOS 7.00 and higher Android 4.1 and higher Microsoft® Windows 7 8 8.1 10 (32/64-bit)
Resolution	Defined by application Full screen mode available
Network	Wired or wireless (Wi-Fi)
System communication	CUEnet ²
IP commands	Complete set available for IP control
Free download from	Apple AppStore for Apple iOS Google Play for Android CUE Web page for MS Windows
Application notes	The appCUE needs controller or touch panel used as application and license server. The appCUE does not operate with nodeCUE without application and license server. The appCUE allows use IP commands for network controlled devices.

Controllers

Tabletop | On-wall Hub

- Ethernet IP enabled controller and integration hub
- Application and license server for mobile applications
- Wired network communication, IP control through Ethernet port
- Hub for EnOcean integration
- IR codes capture and blaster for infra-red controlled devices
- LED indicators
- Real time clock (RTC) for scheduling applications
- Web server and Admin Web for setup through a standard web browser
- USB power supply
- Elegant slim black enclosure, tabletop or on-wall installation



controlCUE-hub

Product code	CS0487
RAM / Non-volatile flash	64 MB / 256 MB
Network	Wired 10/100 BaseT Ethernet
Wireless	EnOcean 868 MHz
Infra-red	Built-in receiver for code capturing Built-in blaster for control
Power supply	5 VDC / max. 4 W, USB-C connector
Enclosure	Black plastic, protection IP20
Dimensions	120 x 120 x 24 mm
Weight	0.2 kg
Included accessories	Wall power supply 5 VDC, Ethernet cable

Controllers

Tabletop | Rackmount Models

- Ethernet IP enabled controllers
- Application and license server for mobile applications
- Variety types of control ports
- Bi-directional control of any IP enabled products through Ethernet port

- Front panel LED indicators for all control ports
- Real time clock (RTC) for scheduling applications
- Web server and Admin Web for setup through a standard web browser
- For available accessories see section Accessories



controlCUE-versatile



controlCUE-one



controlCUE-two

	controlCUE-versatile	controlCUE-one	controlCUE-two
Product code	CS0475	CS0412	CS0414
RAM / Non-volatile flash	64 MB / 256 MB	512 MB / min. 4 GB	512 MB / min. 4 GB
IR receiver for capture	1	1	1
IR receiver for wireless control panels	-	1	1
Network	Wired 10/100 BaseT Ethernet 802.1X authentication mechanism supported Proxy server support	Wired 10/100 BaseT Ethernet 802.1X authentication mechanism supported Proxy server support	Wired 10/100 BaseT Ethernet 802.1X authentication mechanism supported Proxy server support
Bi-directional serial RS-232/485	3	-	-
Bi-directional serial RS-232/422/485	-	2	6
Versatile port	8	-	-
IR/Serial output	-	4	8
General I/O (analog in / digital out)	-	4	8
Low-voltage relay 24 V / 0.5 A	-	2	4
Audio	-	Line in, line out	Line in, line out
Power supply	24 VDC / max. 4 W PoE, IEEE 802.3af / Class 0	24 VDC / max. 4 W	24 VDC / max. 4 W
Enclosure	Aluminum, protection IP20	Aluminum, protection IP20	Aluminum, protection IP20
Dimensions	105 x 43.5 x 92 mm	210 x 43.5 x 92 mm	210 x 43.5 x 92 mm
Weight	0.3 kg	0.5 kg	0.6 kg
Included accessories	Wall power supply 24 VDC / 24 W, Connector set, Ethernet cable	Wall power supply 24 VDC / 24 W, Connector set, Ethernet cable	Wall power supply 24 VDC / 24 W, Connector set, Ethernet cable
Recommended accessories (has to be ordered separately)	Rack Mounting Shelf, IR Adapter /i, Opto-Input Adapter /i, Serial cables, Current Loop Adapter	Rack Mounting Shelf, IR Adapter /i, Opto-Input Adapter /i, Serial cables	Rack Mounting Shelf, IR Adapter /i, Opto-Input Adapter /i, Serial cables

Controllers

DIN Rail Models

- Ethernet IP enabled controllers
- Application and license server for mobile applications
- Variety types of control ports
- Bi-directional control of any IP enabled products through Ethernet port

- Front panel LED indicators for all control ports
- Real time clock (RTC) for scheduling applications
- Web server and Admin Web for setup through a standard web browser
- For available accessories see section Accessories



controlCUE-versatile-d



controlCUE-dali-d



controlCUE-knx-d

	controlCUE-versatile-d	controlCUE-dali-d	controlCUE-knx-d
Product code	CS0453	CS0454	CS0455
RAM / Non-volatile flash	64 MB / 256 MB	64 MB / 256 MB	64 MB / 256 MB
IR receiver for capture	1	1	1
Network	Wired 10/100 BaseT Ethernet 802.1X authentication mechanism supported Proxy server support	Wired 10/100 BaseT Ethernet 802.1X authentication mechanism supported Proxy server support	Wired 10/100 BaseT Ethernet 802.1X authentication mechanism supported Proxy server support
Bi-directional serial RS-232/485	3	1	1
Versatile port	8	4	4
DALI	-	1, external DALI power supply required	-
KNX	-	-	1, external KNX power supply required
Power supply	24 VDC / max. 4 W PoE, IEEE 802.3af / Class 0	24 VDC / max. 4 W PoE, IEEE 802.3af / Class 0	24 VDC / max. 4 W PoE, IEEE 802.3af / Class 0
Enclosure	Plastic, DIN rail, 4 M, protection IP20	Plastic, DIN rail, 4 M, protection IP20	Plastic, DIN rail, 4 M, protection IP20
Dimensions	70 x 90 x 58 mm	70 x 90 x 58 mm	70 x 90 x 58 mm
Weight	0.2 kg	0.2 kg	0.2 kg
Included accessories	DIN rail power supply 24 VDC / 15 W, Connector set, Ethernet cable	DIN rail power supply 24 VDC / 15 W, Connector set, Ethernet cable	DIN rail power supply 24 VDC / 15 W, Connector set, Ethernet cable
Recommended accessories (has to be ordered separately)	IR Adapter /i, Opto-Input Adapter /i, Serial cables, Current Loop Adapter	IR Adapter /i, Opto-Input Adapter /i, Serial cables, Current Loop Adapter	IR Adapter /i, Opto-Input Adapter /i, Serial cables, Current Loop Adapter



controlCUE-dmx-d



controlCUE-enocean-d

	controlCUE-dmx-d	controlCUE-enocean-d
Product code	CS0456	CS0458
RAM / Non-volatile flash	64 MB / 256 MB	64 MB / 256 MB
IR receiver for capture	1	1
Network	Wired 10/100 BaseT Ethernet 802.1X authentication mechanism supported Proxy server support	Wired 10/100 BaseT Ethernet 802.1X authentication mechanism supported Proxy server support
Bi-directional serial RS-232/485	1	1
Versatile port	4	4
DMX512	2	-
EnOcean RF	-	868 MHz for Europe
Power supply	24 VDC / max. 4 W PoE, IEEE 802.3af / Class 0	24 VDC / max. 4 W PoE, IEEE 802.3af / Class 0
Enclosure	Plastic, DIN rail, 4 M, protection IP20	Plastic, DIN rail, 4 M, protection IP20
Dimensions	70 x 90 x 58 mm	70 x 90 x 58 mm
Weight	0.2 kg	0.2 kg
Included accessories	DIN rail power supply 24 VDC / 15 W, Connector set, Ethernet cable	DIN rail power supply 24 VDC / 15 W, Antenna incl. cable, Connector set, Ethernet cable
Recommended accessories (has to be ordered separately)	IR Adapter /i, Opto-Input Adapter /i, Serial cables, Current Loop Adapter	IR Adapter /i, Opto-Input Adapter /i, Serial cables, Current Loop Adapter

Lightweight Controllers

- Cost effective controllers
- IP enabled for system communication CUEnet² only
- IP device control and e-mails not supported
- Variety types of control ports
- Front panel LED indicators for all control ports
- Real time clock (RTC) for scheduling applications
- Power over Ethernet
- Web server and Admin Web for setup through a standard web browser
- Tabletop or DIN rail compatible enclosure
- For available accessories see section Accessories



smartCUE-relay

smartCUE-versatile

smartCUE-versatile-d

	smartCUE-relay	smartCUE-versatile	smartCUE-versatile-d
Product code	CS0496	CS0491	CS0492
IR receiver for capture	1	1	1
Network	Wired 10/100 BaseT Ethernet 802.1X authentication mechanism supported Proxy server support	Wired 10/100 BaseT Ethernet 802.1X authentication mechanism supported Proxy server support	Wired 10/100 BaseT Ethernet 802.1X authentication mechanism supported Proxy server support
Bi-directional serial RS-232/485	3	3	3
Versatile port	6	8	8
Low-voltage relay 24 V / 0.5 A	6	-	-
Power supply	24 VDC / max. 4 W PoE, IEEE 802.3af / Class 0	24 VDC / max. 4 W PoE, IEEE 802.3af / Class 0	24 VDC / max. 4 W PoE, IEEE 802.3af / Class 0
Enclosure	Aluminum Protection IP20	Aluminum Protection IP20	Plastic, DIN rail, 4 M Protection IP20
Dimensions	105 x 43.5 x 92 mm	105 x 43.5 x 92 mm	70 x 90 x 58 mm
Weight	0.3 kg	0.3 kg	0.2 kg
Included accessories	Wall power supply 24 VDC / 24 W, Connector set, Ethernet cable	Wall power supply 24 VDC / 24 W, Connector set, Ethernet cable	DIN rail power supply 24 VDC / 15 W, Connector set, Ethernet cable
Recommended accessories (has to be ordered separately)	Rack Mounting Shelf, IR Adapter /i, Opto-Input Adapter /i, Serial cables, Current Loop Adapter	Rack Mounting Shelf, IR Adapter /i, Opto-Input Adapter /i, Serial cables, Current Loop Adapter	IR Adapter /i, Opto-Input Adapter /i, Serial cables, Current Loop Adapter

Wireless IP Interfaces

- Cost effective Wi-Fi interfaces
- Easy Wi-Fi provisioning
- Fully compatible with touch panels and controllers
- Fully integrated to Cue Visual Composer programming

- API for custom applications
- Front panel status indicator and set button
- Web server and Admin Web for setup through a standard web browser
- Unified plastic enclosure for wall or DIN rail installation



nodeCUE-led4-w



nodeCUE-relay2-w

Product code	CS0476	CS0484
Network	Wireless IEEE 802.11b/g/n Wi-Fi 2.4 GHz	Wireless IEEE 802.11b/g/n Wi-Fi 2.4 GHz
Input	-	2x Power button, common contact connected to L
LED output	4x LED voltage control Max. voltage 26 VDC Max. load 3 A / channel PWM 200 Hz	-
Potential free relay	-	2x NC-CNO Max. voltage 250 VAC Max. output load per relay <ul style="list-style-type: none"> • Resistive load: 10 A • Capacitive load: 10 A • Inductive load: 2 A
Power supply	12 ÷ 26 VDC	100 ÷ 240 VAC, 50/60Hz
Enclosure	Plastic, compact DIN rail, 4 M Protection IP20	Plastic, compact DIN rail, 4 M Protection IP20
Dimensions	71.1 x 90 x 32.2 mm	71.1 x 90 x 32.2 mm
Weight	0.1 kg	0.15 kg

Packages

Mobile Control Panel



Elite-CV-M



Elite-CVD-M

Product code	ST0072	ST0073
Description	Cost-effective control system with mobile licenses Perfect for small sized applications	Cost-effective control system with mobile licenses Perfect for small sized applications
Control panel	2x appCUE runtime license Mobile device is not part of delivery.	2x appCUE runtime license Mobile device is not part of delivery.
Controller	controlCUE-versatile	controlCUE-versatile-d
Included accessories	Wall power supply 24 VDC / 24 W, Connector set, Ethernet cable	Wall power supply 24 VDC / 24 W, Connector set, Ethernet cable

Wired Tabletop Touch Panel



Elite-CV-5



Elite-C2-7

Product code	ST0069	ST0063
Description	Cost-effective 5" touch panel control system Perfect for small sized applications	Wired 7" touch panel control system Perfect for medium sized applications
Control panel	touchCUE-5	touchCUE-7
Controller	controlCUE-versatile	controlCUE-two
Included accessories	Wall power supply 24 VDC / 24 W, PoE power supply, Connector set, Ethernet cables	Wall power supply 24 VDC / 24 W, PoE power supply, Connector set, Ethernet cables

Wired Built-In Touch Panel



Elite-CVD-5B



Elite-CVD-7B

Product code	ST0070	ST0071
Description	Cost-effective wired 4.3" control system Perfect for small sized applications	Cost-effective wired 7" control system Perfect for small to medium sized applications
Control panel	touchCUE-5-B	touchCUE-7-B
Controller	controlCUE-versatile-d	controlCUE-versatile-d
Included accessories	Wall power supply 24 VDC / 24 W, PoE power supply, Wall mounting adapter, Connector set, Ethernet cables	Wall power supply 24 VDC / 24 W, PoE power supply, Wall mounting adapter, Connector set, Ethernet cables

Wired Button Panels

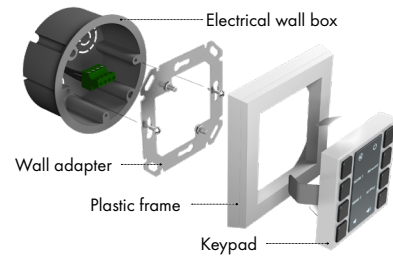
Small Keypad 55 x 55 mm



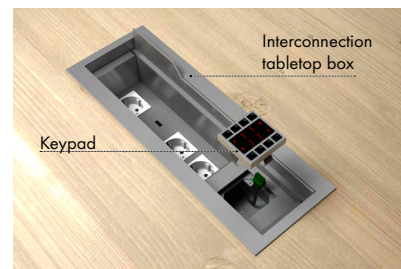
keypadCUE-55

Product code	CS0542
Description	Keypad compatible with frames 55 x55 mm
Buttons	8
Custom labels	User defined button's label Red backlight with variable brightness
Indicators	8 programmable red LEDs in each button
Serial communication	RS-485
Power supply	24 VDC / max. 2 W
Enclosure	Aluminium Protection IP30
Dimensions	55 x 55 x 10.5 mm
Weight	0.1 kg
Included accessories	4-pin, 3.5 mm cable connector Wall mounting adapter Plastic frame, white color

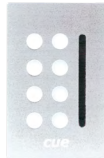
Wall installation



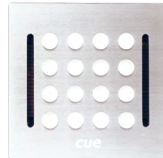
Interconnection tabletop box installation



Built-In Models



keypadCUE-1G



keypadCUE-2G



keypadCUE-3G

	keypadCUE-1G	keypadCUE-2G	keypadCUE-3G
Product code	CS0221	CS0222	CS0223
Description	Built-in model	Built-in model	Built-in model
Buttons	8 with red backlit	16 with red backlit	24 with red backlit
Custom labels	Printed on a transparent foil	Printed on a transparent foil	Printed on a transparent foil
Bar graph 20-LEDs	1	2	2
Indication	Programmable two level button backlit	Programmable two level button backlit	Programmable two level button backlit
Communication	RS-485	RS-485	RS-485
Power supply	24 VDC / max. 3 W	24 VDC / max. 4 W	24 VDC / max. 4 W
Enclosure	Stainless steel front panel Protection IP30	Stainless steel front panel Protection IP30	Stainless steel front panel Protection IP30
Dimensions	69 x 108 x 50 mm	110 x 108 x 50 mm	155 x 108 x 50 mm
Weight	0.2 kg	0.4 kg	0.7 kg
Included accessories	Metal back box	Metal back box	Metal back box

Interfaces

Outputs



PEA208



PEF200

Product code	CS0225-1 (version 110 V) CS0225-2 (version 230 V)	CS0166-1 (version 110 V) CS0166-2 (version 230 V)
Description	Analog output 0 - 10 V Build-in relays LED indicators	Two-channel interface for fluorescent lamp DSI dimming ballasts
Inputs	4x Potential free contact	4x Potential free contact
Outputs	2x Analog output 0 - 10 V 2x Relay 230 V, max. 8 A	2x DSI ports, each up to 50 electronic ballasts
Communication	RS-485	RS-485
Buttons	4x test button	4x test button
Indicators	Power, serial channel, status of outputs	Power, serial channel, status of outputs
Power supply	110 or 230 VAC / max. 12 VA	110 or 230 VAC / max. 12 VA
Enclosure	Plastic, DIN rail, 4 M Protection IP20	Plastic, DIN rail, 4 M Protection IP20
Dimensions	71 x 90 x 58 mm	71 x 90 x 58 mm
Weight	0.3 kg	0.3 kg

Power Switching Units



relayCUE-8



PES03

Product code	CS0335-1 (version 110 V) CS0335-2 (version 230 V)	CS0168
Description	Eight relay switching unit	Three channel suppressor unit for switching channels
Potential free relay	4x C-NO, 4x NC-C-NO	-
Max. voltage	250 VAC	275 VAC
Max. output load per channel	Resistive load: 10 A Capacitive load: 10 A Inductive load: 2 A	10 A
Serial communication	RS-485	-
Potential free contact input	8	-
Test buttons	8	-
Indicators	Power Serial channel activity Status of all relays	-
Power supply	230 or 110 VAC / max. 6 VA	-
Enclosure	Plastic, DIN rail, 9 M Protection IP20	Plastic, DIN rail, 2 M Protection IP20
Dimensions	158 x 90 x 58 mm	36 x 90 x 58 mm
Weight	0.5 kg	0.1 kg

Interfaces

Dimmers



PED108



PED202

Product code	CS0164-1 (version 110 V) CS0164-2 (version 230 V)	CS0165-1 (version 110 V) CS0165-2 (version 230 V)
Description	One-channel dimmer	Two-channel dimmer
Outputs	1	2
Output load type	Resistive and inductive	Resistive and inductive
Max. output load per channel	8 A	2.7 A (max. 4 A total)
Over-current protection	Fuse	Fuse
Serial communication	RS-485	RS-485
Potential free contact input	2	4
Test buttons	2	4
Indicators	Power Serial channel activity Status of output	Power Serial channel activity Status of outputs
Power supply	230 or 110 VAC / max. 6 VA	230 or 110 VAC / max. 6 VA
Enclosure	Plastic, DIN rail, 6 M Protection IP20	Plastic, DIN rail, 6 M Protection IP20
Dimensions	106 x 90 x 58 mm	106 x 90 x 58 mm
Weight	0.8 kg	0.5 kg



PET102



PET105

Product code	CS0244-1 (version 110 V) CS0244-2 (version 230 V)	CS0245-1 (version 110 V) CS0245-2 (version 230 V)
Description	One-channel dimmer Suitable for electronic transformers	One-channel dimmer Suitable for electronic transformers
Outputs	1	1
Output load type	Resistive and capacitive	Resistive and capacitive
Max. output load per channel	2 A	5 A
Over-current protection	Electronic	Electronic
Serial communication	RS-485	RS-485
Potential free contact input	2	2
Test buttons	2	2
Indicators	Power Serial channel activity Status of output	Power Serial channel activity Status of output
Power supply	230 or 110 VAC / max. 6 VA	230 or 110 VAC / max. 6 VA
Enclosure	Plastic, DIN rail, 3 M Protection IP20	Plastic, DIN rail, 6 M Protection IP20
Dimensions	53 x 90 x 58 mm	106 x 90 x 58 mm
Weight	0.5 kg	0.5 kg

Power Supplies

Wall and Desktop



CUAdapter-24J24



CUAdapter-24P24

Product code	CS0436	CS0437
Description	AC/DC switching mode power supply	AC/DC switching mode power supply
Output	24 VDC / 24 W	24 VDC / 24 W
Connector	Power Jack	2-pin, 3.5 mm
Power supply	90 to 240 VAC, 50/60Hz	90 to 240 VAC, 50/60Hz
Enclosure	Plastic Protection IP40	Plastic Protection IP40
Dimensions	94 x 46 x 36 mm	94 x 46 x 36 mm
Weight	0.2 kg	0.2 kg

DIN Rail



CUAdapter-24DIN15



CUAdapter-24DIN30



CUAdapter-24DIN60



DALIpwr

Product code	CS0474	CS0367	CS0368	CS0459
Description	AC/DC switching mode power supply	AC/DC switching mode power supply	AC/DC switching mode power supply	DALI power supply
Output	24 VDC / 15 W	24 VDC / 30 W	24 VDC / 60 W	Max. current 240 mA
Connector	Terminals	Terminals	Terminals	Terminals
Power supply	85 to 264 VAC, 50/60Hz	85 to 264 VAC, 50/60Hz	85 to 264 VAC, 50/60Hz	85 to 264 VAC, 50/60Hz
Enclosure	Plastic, DIN rail, 2 M Protection IP20	Plastic, DIN rail, 5 M Protection IP20	Plastic, DIN rail, 5 M Protection IP20	Plastic, DIN rail, 1 M Protection IP20
Dimensions	25 x 93 x 56 mm	78 x 93 x 56 mm	78 x 93 x 56 mm	17 x 90 x 58 mm
Weight	0.1 kg	0.3 kg	0.3 kg	0.05 kg

Power over Ethernet



PoE Adapter

Product code	CS0327
Description	PoE injector compliant with IEEE 802.3af/at standards
Input	Ethernet, RJ-45 connector
Output	Ethernet with PoE, RJ-45 connector
Power supply	100 to 240 VAC, 50/60Hz
Enclosure	Plastic, Protection IP40
Dimensions	131 x 60 x 33 mm
Weight	0.2 kg

Accessories

Mounting Accessories



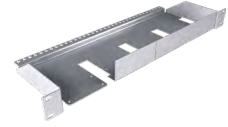
Rack Mounting Kit 5



Rack Mounting Kit 7



Rack Mounting Kit 12



Rack Mounting Shelf

Product code	CS0488	CS0489	CS0490	CS0449
Description	19" rack mounting kit for touchCUE-5-B	19" rack mounting kit for touchCUE-7-B	19" rack mounting kit for touchCUE-12-B	19" rack mounting shelf for tabletop and lightweight controllers
Enclosure	Dural	Dural	Dural	Stainless steel
Dimensions	Rack 19", 2 U 482.6 x 88.1 x 3 mm	Rack 19", 3 U 482.6 x 132.5 x 3 mm	Rack 19", 6 U 482.6 x 265.9 x 3 mm	Rack 19", 1 U 482.6 x 43.5 x 165 mm
Weight	0.4kg	0.6 kg	1.1 kg	1.3 kg

Cables and Adapters



IR Adapter Set



Opto-Input Adapter /i



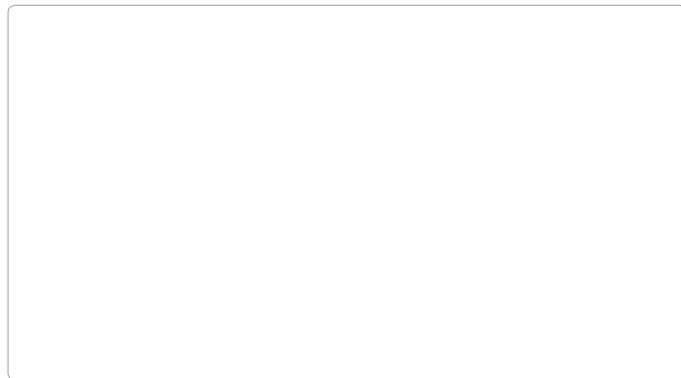
Serial Cable 5-pin to RJ-14



Serial Cable 3-pin to RJ-14

Product code	CS0553	CS0257	CA0183	CA0184
Description	5x infra-red emitter compatible with IR/Serial output and versatile port. Mounting on the receiver window with double-sided adhesive tape Cable length 2 m	Photosensitive cell sensor compatible with General I/O and Versatile port. Mounting on the indicator with double-sided adhesive tape Cable length 2 m	RS-485 serial cable between controller and power switching units, dimmers and interfaces	RS-485 serial cable between controller and power switching units, dimmers and interfaces
Connectors	2-pin, 3.5 mm	2-pin, 3.5 mm	5-pin, 3.5 mm RJ-14	3-pin, 3.5 mm RJ-14

cue



© CUE, a.s., 2018 | www.cuesystem.com | www.touchONE.eu | www.systemone.eu | sales@cuesystem.com
All rights reserved. | Specifications subject to change without notice. | All logos are registered trademarks of their respective owners.